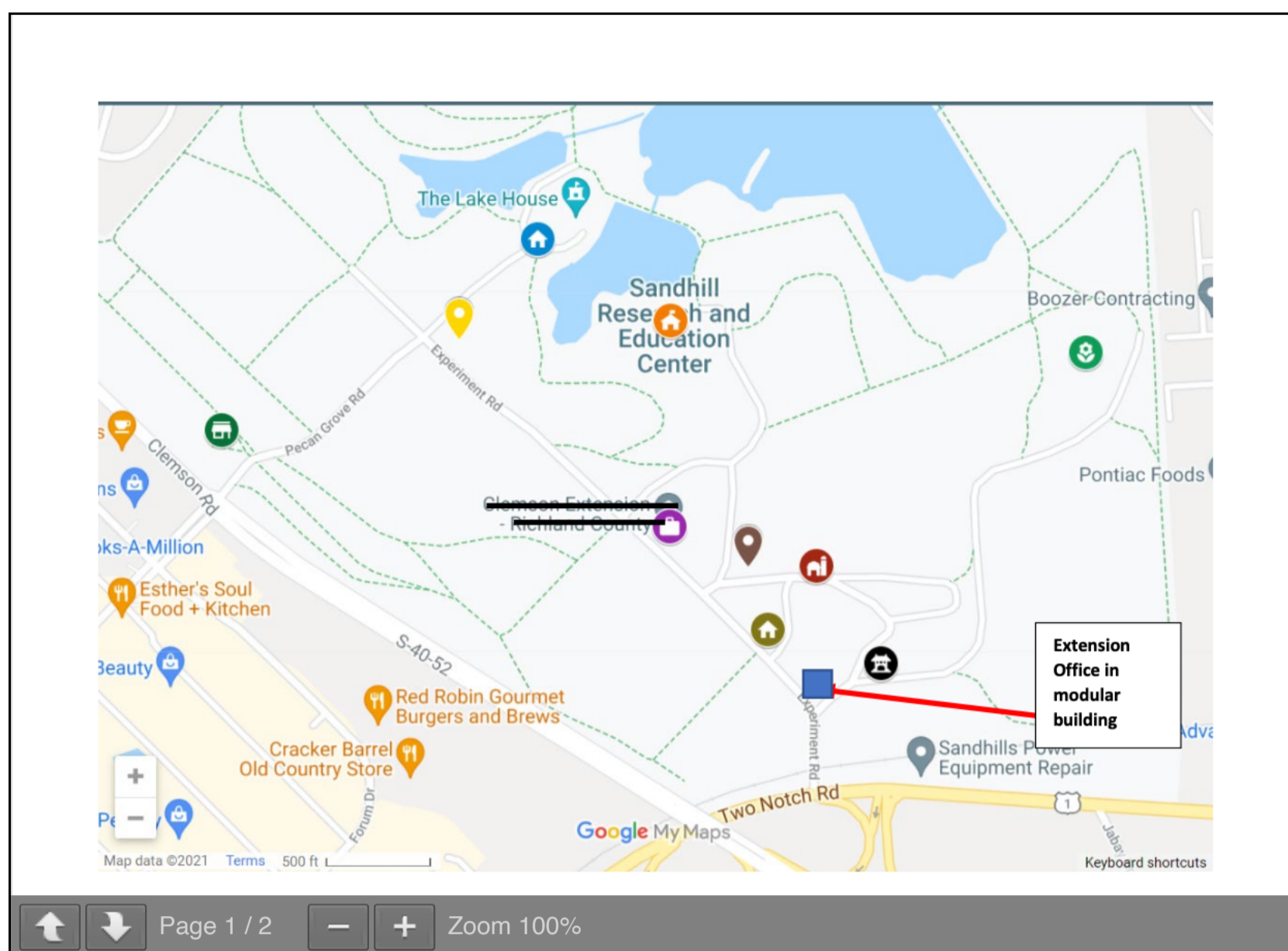


Richland County Master Gardener Association

Home Continuing Ed Opportunities Public Education Projects Intern & Membership Info Scholarships
Soils and Soil Testing **The Clemson Sandhill Property** Turfgrass Information Members' Corner
Documenting Volunteer Hours IPM – Integrated Pest Management USDA Plant Hardiness Zones Map Contacts and Links
Sitemap

The Clemson Sandhill Property



Hours of Operation

Richland County Cooperative Extension is housed in one of the portables near the Two Notch Road entrance to the Sandhill Research and Education Center (REC) campus. It is open Monday – Friday, 8 AM to 4:30 PM except for holidays. The office is closed for lunch from 1 PM to 2 PM.

Sandhill REC is housed in the Agribusiness Building. It is open Monday – Friday, 8 AM to 4:30 PM except for holidays. The office is closed for lunch from 12:30 PM to 1:30 PM.

Access to the Clemson Sandhill Campus

Sites that RCMGA routinely uses – the Carolina Yard, the Compost Education Area, the Historic Pond Trail, and the new Sandhill Children's Garden – are only accessible via the remote gate access system at the Two Notch Road entrance. The teams that work in these areas each have a different code to open the gate, and the codes are only good during specific times and days. For access at other times use the remote gate access system on the left of the entrance road. Request entry to the Extension. The gate will be opened remotely by someone in the Extension Office Monday-Friday, 8am-1pm and 2pm-4:30pm. The office is closed on holidays and weekends.

Driving on the Sandhill Property

There are a number of sandy, unpaved roads on the Clemson Sandhill property, particularly near the Quonset hut where we store items and near the greenhouse. It's easy to get vehicles stuck where the sand is loose and not hard-packed. Clemson employees are not permitted help us get stuck cars moving, and AAA doesn't offer tow services for vehicles that are more than 50 feet from a road surface. [Here are some actions that may help.](#)

Be careful if "off-roading" or driving over non-road surfaces since wire fences near the greenhouse and Quonset hut may be difficult to see. They are marked with flags, but the flags may be difficult to see. It's best to stay on road surfaces. In one or two areas there is a small steep dropoff from off-road to sandy lanes. Cars that have a low profile may get stuck on the dropoff.

Library Presentations

The following programs are scheduled presentations in one of the Richland County Library branches:

(The list of programs will be updated as they are scheduled.)

Zoom Access for RCMGA Monthly Membership Meetings

Meetings are held on the first Tuesday of every month. Because we may be meeting virtually or in person, meeting times may vary from what was usually scheduled. Check the *Biweekly Digest* to confirm meeting dates and times.

Join Zoom via tablet, computer, or smartphone.

Zoom connection for 2022-2023 meetings:
<https://us02web.zoom.us/j/83603304>

Continuing Education – Master Gardener Mondays

Upcoming Continuing Education programs at 2 PM Eastern on the first Monday of the month. Click on the program title to open the registration page. Don't forget to log your Continuing Education in the Clemson reporting system!

- July 3, 2023 [Plant This Not That](#) (1 hour Continuing Education)
- August 7, 2023 TBA
- September 4, 2023 No webinar/Labor Day
- October 2, 2023 [Fertilizer Regulatory & Seed Certification](#) (1 hour Continuing Education)

HGIC Newsletter

► [SC Fruit and Vegetable Field Report – September 11, 2023](#)
Midlands Region Rob Last Some welcome rainfall we had over the weekend will help to keep soil moisture reserves available for crops. Looking at the forecast, we are looking at some reduced temperatures, which will help to set fall solanaceous fruit. I am beginning to pick up diseases in crops, particularly bacterial diseases such as [...]
Justin Ballew

2023 MG Conference



RCMGA Calendar

A month-by-month list of our meetings, events, and opportunities for educational service is under the Members' Corner tab.



Reporting System FAQs

Questions about the Reporting System? Here are some [FAQs](#). For other questions you may have, please contact Cathy Beattie at RCMGAwebsite@gmail.com.



Weekly Email from the Clemson Home & Garden Information Center (HGIC)



Some of the information on this website was selected from the HGIC Friday email. [Sign up to](#) receive the latest news and posts!